

In-Ears Canada Audiologist Guide

The following images are meant for reference purposes only. We will not accept impressions that are already pre-trimmed.
Impressions must include all key areas to be usable for custom earplugs.

MULTIPLE ANGLED EXAMPLE OF GOOD IMPRESSIONS

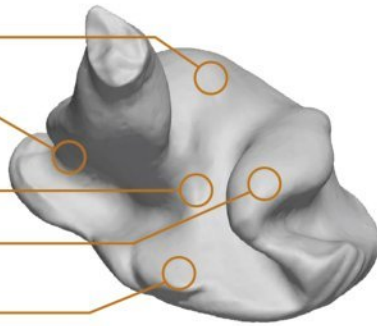
BOWL

TRAGUS

CRUS OF HELIX

CYMBA

EXTRA MATERIAL



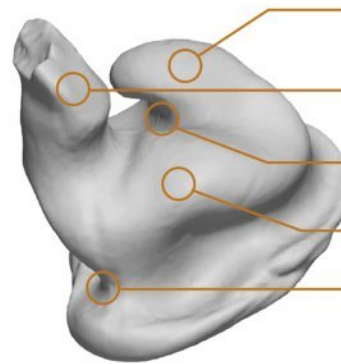
CYMBA

2ND BEND

CRUS OF HELIX

BOWL

TRAGIC NOTCH



WE REQUIRE EXTRA MATERIAL OUTSIDE OF THE EAR ABOVE THE TRAGUS

EXTRA MATERIAL

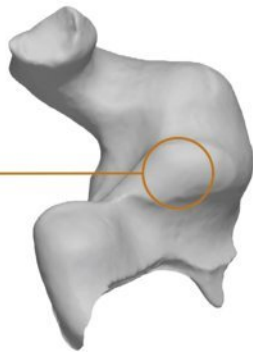


EXTRA MATERIAL

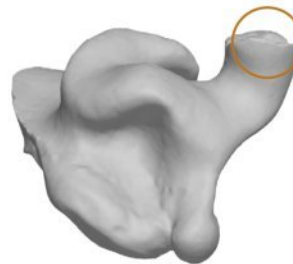


⚠️ EXAMPLES OF BAD IMPRESSIONS ⚠️

MISSING CYMBA



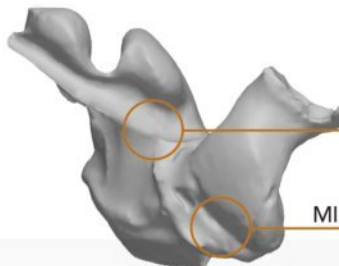
CANAL DOESN'T GO PAST 2ND BEND



MISSING BOWL



MISSING CRUS OF HELIX



MISSING TRAGUS/TRAGIC NOTCH



In-Ears Canada Audiologist Guide

1. A full impression is required of each ear. It must include the full helix, crus of the helix, tragus and antitragus. **IMPORTANT NOTE: The impression must be taken completely PAST the second bend of the ear canal.** (Be sure to examine the ear canal for any obtrusions or inflammation.)
2. We require an impression made of silicone material and we recommend high viscosity impression material.
3. The impression must be an OPEN MOUTH TYPE. Use a 1-2" bite block during the impression process to reduce jaw movement. This will yield a better seal in the final product.

After we have approved your impressions (see point 4) securely pack them in the box provided by your Audiologist, write your name on the box and send to:

In-Ears Canada
21 Fresnel Lane
Sambro, Nova Scotia
B3V 0C1

Please make sure to send your impressions within a month of getting them made. Impressions material might change over time and possible affect the fit of the earplugs.

4. **Please send pictures of your impressions to info@inearscanada.ca before shipping them. We will advise you to ship once we have approved them. Please use the pictures below as a guide for what we are looking for with your pictures.**



For questions or concerns about these instructions, please contact our support services.